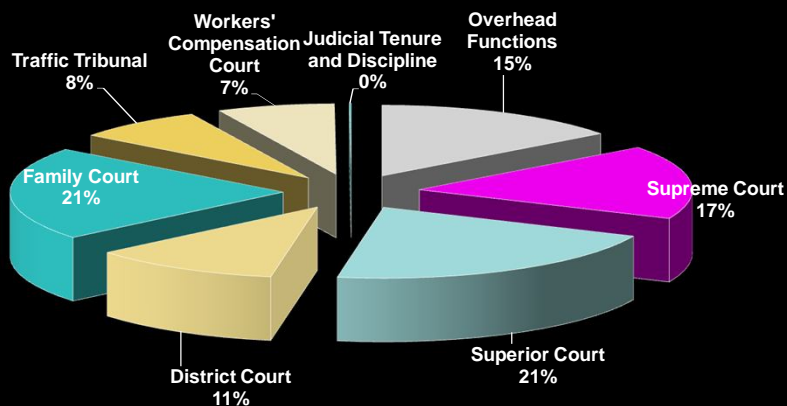


Rhode Island Judiciary Governor's FY 2015 and FY 2016 Recommendations

Staff Presentation to the House
Finance Committee
April 16, 2015

FY 2016 Governor Recommended



Summary By Fund Source

(In millions)	Enacted	FY 2015 Gov. Rev.	FY 2016 Governor
General Revenues	\$91.6	\$94.1	\$95.8
Federal Funds	1.9	3.2	3.2
Restricted Receipts	10.8	11.3	10.4
Other Funds	1.4	1.4	2.5
Total	\$105.7	\$110.0	\$111.9

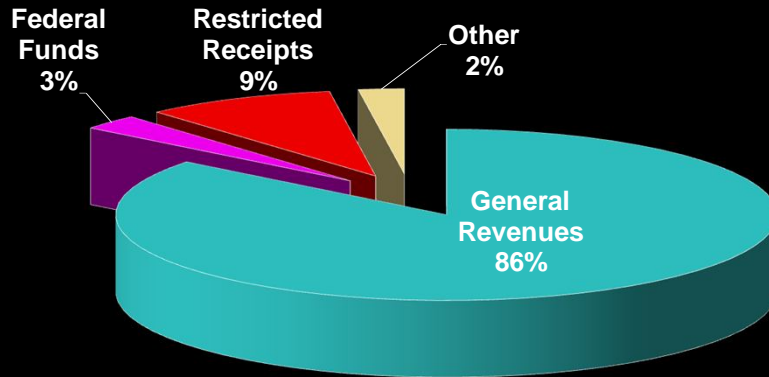
3

Summary By Fund Source

Change to Enacted (In millions)	FY 2015 Gov. Rev.	FY 2016 Governor
General Revenues	\$2.4	\$4.2
Federal Funds	1.3	1.3
Restricted Receipts	0.6	(0.4)
Other Funds	0.1	1.2
Total	\$4.4	\$6.2

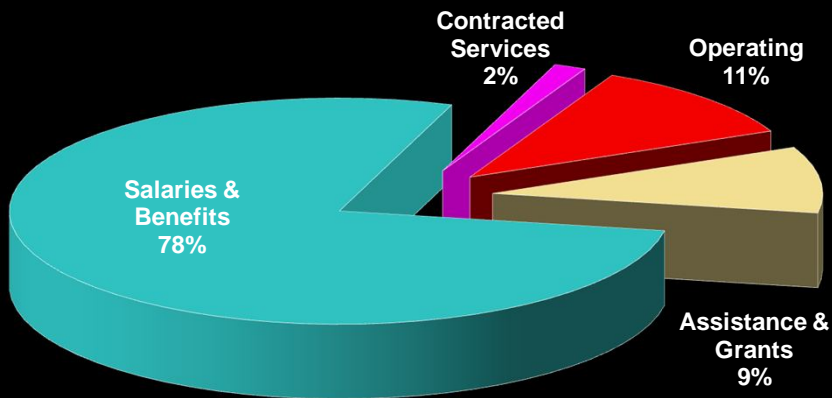
4

FY 2016 Governor by Source



5

FY 2016 Governor by Category



6

Full-Time Equivalent Positions

Full-Time Positions	FTEs	Chg. To Enacted
Enacted Authorized	723.3	-
FY 2016 Request	723.3	-
FY 2016 Governor	723.3	-
FY 2014 Average Filled	669.7	(53.6)
Filled as of April 4 th	682.5	(40.8)

7

Governor's FY 2015 Revisions

- First quarter report
 - ◆ Projected a deficit of \$5.5 million
 - ◆ No Corrective Action Plan
 - Identified that alternate source for case management system would be needed
 - IT fund
- Second quarter report
 - ◆ Projected a deficit of \$4.9 million
 - ◆ Updated for actual expenditures

8

Governor's FY 2015 Revisions

- \$2.2 million more for personnel
 - ◆ Reflects \$2.3 million for COLA
 - ◆ Shift of \$1.6 million from restricted receipts from indirect cost recoveries to fund personnel
 - ◆ Department requested to use funding for its new case management system
 - Or receive alternate source such as IT fund

9

Governor's FY 2015 Revisions

- Personnel
 - ◆ Shifted \$0.1 million to federal grant
 - ◆ Shifted \$0.1 million to small claims mediation restricted account
- Law library
 - ◆ Adds \$0.2 million to restore historical funding level

10

Case Management System

- Electronic filing for all courts
 - ◆ Computers, servers, software
 - ◆ Increased efficiency for data management
 - ◆ Intended to fund with restricted receipts
- Requested total of \$2.5 million
 - ◆ Governor includes \$0.9 million
 - ◆ Judiciary informed IT funds could be used
 - ◆ Budget does not include funding

11

Court Technology & Capital

- \$0.1 million more than enacted
- Reflects increases for software and maintenance agreements
 - ◆ Unrelated to Case Management System
- Rhode Island Capital Plan Projects
 - ◆ Projects throughout court facilities
 - ◆ HVAC - \$0.1 million more
 - ◆ Asset Protection - \$21,790 more

12

FY 2016 Summary: By Program

<i>Change to Enacted</i>	<i>Gen. Rev.</i>	<i>All Funds</i>
Overhead	\$671,663	\$1,744,024
Supreme Court	114,712	(138,709)
Superior Court	1,065,913	1,066,389
District Court	847,011	753,460
Family Court	1,672,963	2,977,247
Traffic Tribunal	(217,898)	(217,898)
Workers' Comp. Court	-	51,167
Judicial Tenure & Disc.	6,014	6,014
<i>Total</i>	<i>\$3,488,715</i>	<i>\$4,497,670</i>

13

Overhead Functions



Pay-go Pensions

- 7 judges still working that are not part of the pension system
 - ◆ Did not contribute until recent pension reform
- All are eligible now for some pension
 - ◆ 3 eligible for full benefits (100%)
 - ◆ 4 eligible for reduced benefits (75%)
- FY 2016 total funding - \$5.5 million

15

FY 2016 Court Technology

- \$5.8 million from general revenues
 - ◆ Computer systems and maintenance
 - ◆ Software and technical training
 - ◆ 24/7 network monitoring
 - ◆ Interagency help desk
- \$0.1 million more
 - ◆ Software agreements
 - ◆ Maintenance contracts

16

FY 2016 Facilities and Operations

- \$6.7 million from general revenues
 - ◆ Custodial and maintenance
 - ◆ Security services
- Expenses appear in other budgets
- \$0.4 million more to reflect allocation of increased operating expenses to non-judicial agencies occupying courthouse space

17

FY 2016 Finance, Budget and Employee Relations

- \$2.0 million from general revenues
 - ◆ Finance and budget
 - ◆ Employee relations
- \$0.1 million more than enacted
 - ◆ Reflects decreased turnover savings due to filling of vacant positions

18

FY 2016 Community Outreach and Public Support

- \$1.0 million from general revenues
 - ◆ Supports interpreter services
 - ◆ Informational programs
 - ◆ Educate public about services, programs and activities of the Judiciary
- Integrated Civics Education
 - ◆ Teaches school children about the justice system

19

FY 2016 Planning & Education

- \$0.2 million from Gen Rev for planning
 - ◆ Quarterly reports, performance measures
 - ◆ Coordinates diversity training programs for new attorneys and court employees
 - ◆ Monitors certain grants
- \$0.3 million from Gen Rev for education
 - ◆ Mandatory continuing legal education for approximately 6,000 attorneys statewide
 - ◆ Education program for judges and magistrates

20

FY 2016 Clerks & Records Center

- \$3.5 million from general revenues
 - ◆ Legal research
 - ◆ Writing assistance to judges and magistrates
 - ◆ Record storage
- Records Storage
 - ◆ Judicial Records Center in Pawtucket
 - ◆ Semi-active, inactive and archival
 - ◆ Active records at each respective court

21

FY 2016 Disciplinary Board Counsel

- \$1.3 million from restricted receipts
 - ◆ \$200 annual fee from active attorneys
- Disciplinary Board
 - ◆ Processes disciplinary complaints filed against RI attorneys
 - ◆ Oversees the Office of Disciplinary Counsel
 - ◆ Investigates allegations of attorney misconduct

22

FY 2016 Law Library

- \$1.2 million from general revenues
 - ◆ \$0.2 million more to reflect actuals
- The State Law Library
 - ◆ Resource for Judges, Magistrates and attorneys
 - ◆ Publicly accessible legal reference service
 - ◆ Over 110,000 volumes and computer aided legal research

23

FY 2016 Indigent Defense

- \$3.5 million from general revenues
 - ◆ Consistent with enacted and revised levels
 - ◆ Court appoints legal representation when Public Defender has a conflict of interest
- Actual expenditures
 - ◆ FY 2012 - \$3.2 million
 - ◆ FY 2013 - \$3.4 million
 - ◆ FY 2014 - \$3.6 million

24

FY 2016 Governor Changes

- Appellate Screening Unit - \$0.8 million
 - ◆ Supports central staff attorney – Supreme Ct.
 - ◆ Screens all civil and criminal appeals
 - ◆ Mission is to increase efficiency of appeals
- Board of Bar Examiners - \$0.2 million
 - ◆ Supports the Board of Bar Examiners
 - ◆ Administers the RI Bar exam
 - ◆ Funding for 1.0 position and operations

25

Individual Courts FY 2016 Recommendation

Supreme Court

- Final court of review
- Only constitutionally established court
- \$35.4 million for program and 161.7 positions
 - ◆ 120.7 associated with some degree of overhead
 - ◆ 41.0 strictly for Supreme Court operations

27

Supreme Court

- Includes \$16.6 million for overhead functions
- Excluding overhead
 - ◆ \$0.1 million less than enacted
 - ◆ \$0.2 million less for capital projects
 - ◆ \$0.1 million less for personnel
 - Reflects filled positions
 - Revised benefit rates

28

Superior Court

- Jurisdiction over all felony and misdemeanor cases appealed or waived from District Court
- \$23.6 million to support operations and 165.7 positions
 - ◆ \$1.1 million more than enacted
 - ◆ Primarily for COLA

29

District Court

- \$12.6 million for operations and 93.0 positions
 - ◆ Small claims
 - ◆ Violations of municipal ordinances and regulations
 - ◆ Misdemeanors when right to jury trial is waived

30

District Court

- Veteran's Court
 - ◆ April of 2011
 - ◆ 3.0 FTEs
 - ◆ "Successfully rehabilitate participants, on a case-by-case basis, by providing the tools and skills necessary to address veterans' unique challenges to reintegrate successfully into society and to maintain a productive and law abiding lifestyle within the community"

31

Family Court

- Cases involving
 - ◆ Juveniles
 - ◆ Parental neglect or abuse
 - ◆ Paternity issues & divorces
- \$23.9 million to support operations and 173.7 positions
 - ◆ \$3.0 million more than enacted
 - ◆ \$1.0 million for personnel
 - ◆ \$1.0 million more to reflect actual federal award for child support enforcement

32

Traffic Tribunal

- Civil traffic violations
 - ◆ License suspensions
 - ◆ DOT and DEM violations
 - ◆ Littering
- \$8.5 million to support operations and 78.2 positions
 - ◆ \$0.2 million less than enacted to reflect security savings and reduced software maintenance contracts

33

Workers' Compensation Court

- Adjudicates all workers' compensation cases
 - ◆ Including rehabilitation of injured employees
- \$7.8 million from restricted receipts to support operations and 50.0 positions
 - ◆ Adjustments to benefit costs
- Judiciary has reported lack of Sheriffs has led to delayed court calendars under certain circumstances

34

Judicial Tenure and Discipline

- Judicial Tenure and Discipline Commission
 - ◆ Conducts investigations of judges suspected or charged with misconduct
- 14 member commission serves without compensation
- Funding essentially as requested for 1.0 position and operations

35

FY 2016 – 2020 Capital Plan

<i>Project</i>	<i>Status</i>	<i>Cost</i>	<i>Financing</i>	<i>End Date</i>
Noel Shelled Courtroom	Revised	\$10.0 M	RICAP	Post - FY 2020
Licht Complex Restoration	Revised	\$4.3 M	RICAP	FY 2020
System-wide HVAC	Revised	\$9.3 M	RICAP	FY 2020
Asset Protection	Ongoing	\$10.7 M	RICAP	Perpetual

36

FY 2016 – 2020 Capital Plan

- Noel Shelled Courtroom
 - ◆ Approved plan - start date of FY 2019
 - ◆ Request moved start to current year
 - ◆ Recommendation is consistent with the approved plan
 - Includes additional funding for inflation
 - Impact on caseloads unclear

37

Rhode Island Judiciary Governor's FY 2015 and FY 2016 Recommendations

Staff Presentation to the House
Finance Committee
April 16, 2015